

debra taylor

# Spirit of Life

boutique

*There is life and lingerie after breast surgery*

WINTER 2017 NEWSLETTER EDITION

*Yes, let's talk about Anita! Since 1886.*



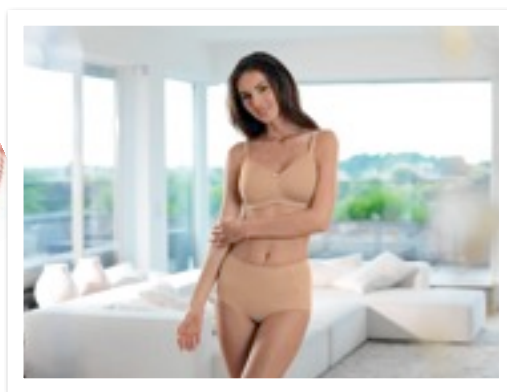
Debra & Dorothy

## *A note from Debra*

*Hello Girls... Something a little different. We have decided to produce an online version of our newsletter for winter this year. If you have found this on our website, then please give us some feedback on what you think of this format etc. At this stage we are not going to stop our print version as a lot of our senior customers do not have computers or access to them. Also in this issue we want to tell you about Anita products. Anita is a very traditional German company having been founded in the late 1800s and still owned and run by the same family. In recent years sourcing Anita has been an issue but now this has been resolved with a new Australian distributor and so we have good stocks now.*

*Debra*

It all began in Dresden back in 1886 when Ernst Max Helbig, great-grandfather of today's owner, Georg Weber-Unger, first set up the company. In the early years they produced elastic braces and heavy, yet also elastic, body belts. Men and women were rather heavysset back then, which meant these types of articles were highly sought after! Today they are a traditional family company based in Brannenburg, Upper Bavaria, and managed by Georg Weber-Unger and his two sons Georg and Johannes: the company's fourth generation. They develop and design all of their articles in Brannenburg, a site beautifully located on the very edge of the German Alps. You can see and feel the quality of their products for yourself when you visit us. Today, Anita are a world wide respected manufacturer of lingerie including specialist mastectomy fashion bras, mastectomy swimsuits and also a great range of breast prostheses including great swim forms too.



## **20% off Anita bras in June!**

For personal shoppers during the month of June only, we have been able to negotiate a factory rebate with Anita. When you buy two (or more) Anita bras you will enjoy a 20% discount on your purchase. Now please note that this offer does not have a rain check on it and is not valid with any other offers. You can phone your order through if you cannot get into the Boutique. If you order from our website, the discount will not show, but rest assured the girls will give you that magic 20% off! (No other discounts apply)



### **Anita Mastectomy Bras.**

Having been in the business for over 100 years, Anita know how to make a quality product. On this page we have featured three of the Anita Mastectomy Bras. All feature bilateral pockets for your prosthesis.

So Natasha on the top left is ideal for ladies who are undergoing radiation therapy and also for ladies with sensitive skin. It has very soft lining on the pockets and very soft cups. Beautifully made too.

Havana (directly above) is new from Anita and has a floral stretch lace to create a charming neck line. Straps are made of soft foam covered in microfibre for all day comfort.

Safina (to the left) is a classic bra that runs to a fuller sized cup and is very supportive. Padded shoulders and shapes like an underwire although it is actually a soft cup bra. Bilateral pockets.





### **Anita Breast Forms.**

For many years Anita have manufactured a range of breast forms in their German factories. In this newsletter we have featured two of the more popular styles from their range. Left is the Partial 1057 prosthesis which is ideal for lumpectomies or reconstruction. (Evens up the breast to match the other side) The front is a soft silicone and the back has a pocket that you can fill with fibre (supplied) to adjust the sizing.

### **Breast Prostheses and Medicare.**

If you are the holder of a Medicare card, then Medicare will reimburse you up to \$400 towards your prosthesis every two years. (Or \$800 if you are bilateral and need two) What this means to you is that you will always have the right sized prosthesis should you gain or lose weight and need a new fitting after two years and also always be covered by manufacturer's warranty.

Did you know that Debra even has all the Medicare claim forms available in the Boutique. And on top of that she will help you fill out the paperwork and then take it to the local post office and post it for you. This is just another aspect of her amazing service. And always provided with good cheer and a smile. Experience it for yourself soon!

### **Another Anita Form.**

This prosthesis is a silicone form with a breathable microfibre backing. Anita are the only manufacturers to produce this breathable microfibre backed breast form and it is 25% lighter than other breast forms and is very very soft. The microfibre has excellent compatibility with your skin and it is very comfortable to wear. Come into the boutique and let the girls show you for yourself how good these really are to wear.





### **More Anita Mastectomy Bras.**

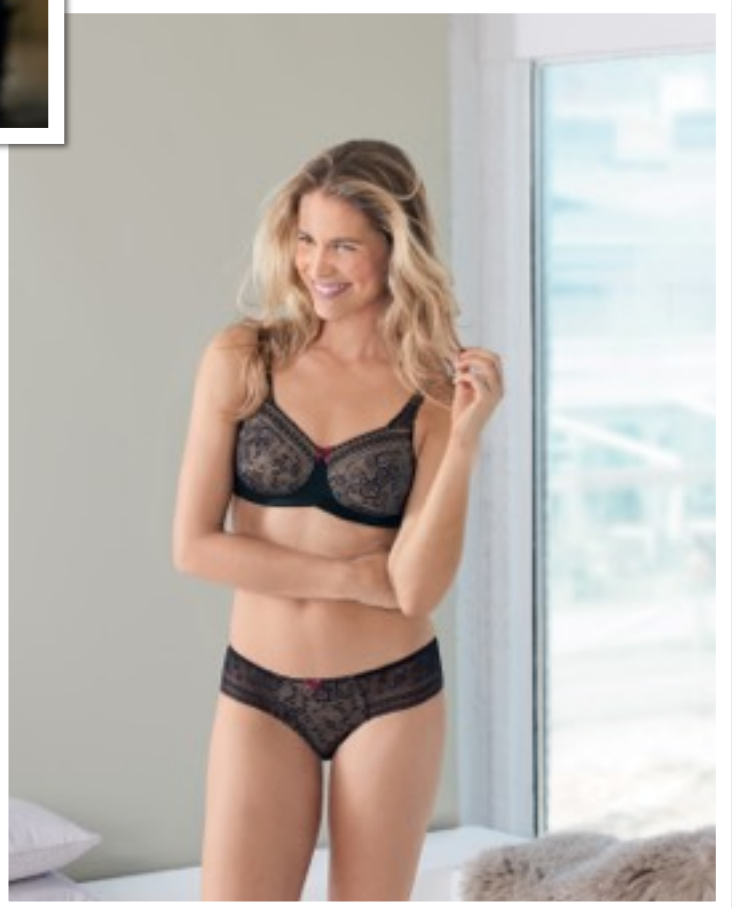
To the left is Anita's Ancona Mastectomy Soft Cup Bra. Featuring bilateral pockets. All over lace print, very feminine. Grey background with black print and a bow in the middle. Comfort straps are padded over the shoulders and had great support around the back and under the arms. Also has matching brief as shown in the picture.

Fleur by Anita is a Mastectomy Soft Cup bra featuring beautiful black lace. Has a high stretch fleecy neck line band. Cotton bilateral pockets for your prosthesis and has matching briefs available.



### **Just for you in June.**

Just buy three or more of the fabulous Anita bras in June and as well as a 20% discount, you will receive one of these great little manicure sets. Ideal to pop in your handbag for that unexpected broken nail! Supplies are limited so get in soon.



***Plan your visit. Simply scan this QR code with your smart phone.***  
This will take you to a page on our website that will tell you all you need to know about visiting us. Opening times, how to get here, where to park etc.

